

Inorganics, solutions and auxiliaries

103024 Chlorophenol red indicator

Formula Hill $C_{19}H_{12}Cl_2O_5S$

Chemical formula

Molar mass 423.27 g/mol

Density

pH value

Form solid

Color brown

Odeur phenol-like

Melting point ~ 261 °C

Boiling point

Vapor pressure

Explosion limits

Flash point

Thermal decomposition

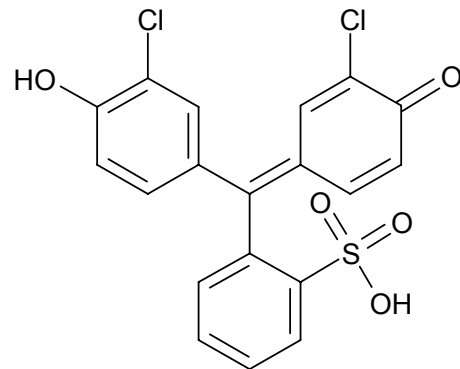
Heat of evaporation

Evaporation number

Ignition temperature

Bulk density ~ 720 kg/m³

Refractive index



Solubility in water (20 °C) insoluble

Solubility in ethanol ~ 200 g/l (20 °C)

Solubility in chloroform

Water absorption

Saturation conc. (air)

Dielectric constant

Dipole moment

Viscosity dynamical

Viscosity kinematical